

# SOUTHWEST PIONEER

Vol. XXVIII, No. 5

SW HIGH SCHOOL, ST. LOUIS 39, MO.

Thursday, Dec. 23, 1965

## Tyro gives new play for "frosch"

The Tyro Club with the help of the Drama and Music departments presented a one-act Christmas play for the freshmen Understanding Music classes last Monday.

The play, a project of the Tyro (Creative Writing) Club, was written by the club's president, Danette Key. Her composition and the efforts of other members were submitted to Miss Guenther and the Drama department.

Miss Guenther selected the best play and then chose the cast from her 7th period dramatics class. Gene Dunham, Sandy Purcelli and Fred Stephenson were chosen for the leading roles.

Danette's play is the story of a bitter mute at Christmas time, and how she learned to live with her handicap.

The freshmen also heard some of the soloists who tried out for the Christmas auditorium sessions. Doing vocal selections were Treva Huhn, Gladys Nickins, and Michael Wadley. Wayne Muehlenbeck and Bob Shroll sang a duet. Jerry Marion and Wayne Muehlenbeck played the organ and Shelley Madden danced.

The Tyro Club has been working on this project for many weeks and in the future they are planning to have a speaker, Mrs. Elaine Afton who edits School and Home. A literary magazine is planned for the spring semester.

## SWerner enters Poster Contest

George Schroll, semester seven of Mr. Merchant's advisory, entered the annual Christmas poster contest sponsored by the St. Louis Christmas Carols Association.

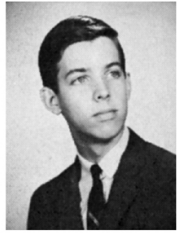
George's poster, designed in Mrs. Bersh's art class, depicted three overlapping candles.

The purpose of the annual activity is to remind the public of the original meaning of Christmas and to encourage young people who are interested in art.

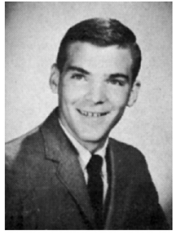
## SWerners win awards

Elisabeth Boisaubin, a senior of Mrs. Lee's advisory, is one of the outstanding English students in the United States. She was named a runner-up in the annual Achievement Awards competition sponsored by the National Council of Teachers of English.

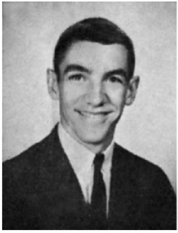
All the winners were recommended for scholarships in 1966. To enter, Beth submitted three compositions, a supporting letter from Mrs. Morrissey, and the approval of Miss Hachtman, head of the English department.



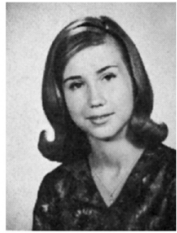
CRAIG MARKS — 5 semesters on SC, co-editor of PIONEER, top ten scholar.



RICHARDS CHAEFER — 5 semesters on SC, lettered in track and cross-country.



MICHAEL SCHNYDER — 6 semesters on SC, ROUNDUP staff, SW rep. at Leadership Day.



DANETTE KEY — 3 semesters on SC, PIONEER staff, Tyro president, lead in operetta.



ANN WINFREY — 4 semesters on SC, French Club president, top ten scholar, PIONEER staff.



SUSAN TOBEY — 4 semesters on SC, assistant ROUNDUP editor, active in sports.

## Six candidates

## SW elects SC officers on Jan. 6

SW will elect Student Council officers Jan. 6, following a double and session featuring the campaign speeches by Danette Key, Craig Marks, Richard Chaefer, Michael Schnyder, Susan Tobey and Ann Winfrey.

Danette Key, a three semester SC member, was on the Lunchroom Committee and Constitutional Review Committee. Active in music, Danette is a member of A Cappella Choir and Madrigals. She is now working hard as president of Tyro Club.

Craig Marks has been on SC for five semesters, serving as chairman of the Lunchroom and School Spirit Committees. Besides having leads in operettas, Craig played on the tennis team and won the Sophomore Pilgrimage and the Harvard Book Award.

Rich Schaefer, a member of SC for five semesters, is the Executive Officer of SC. Lettering in both track and cross-country, Rich contributed much to the State Champion cross-country team. Rich, an honor student, was recently elected president of orchestra.

Mike Schnyder, during his six semesters on SC, served on committees and as SW Safety Council Representative. Mike, vice-president of A Cappella, has sung in many Hello Days and Shindigs Besides playing intramural basketball, he went to Leadership Day at Mizzou.

Sue Tobey, four semesters in SC, was a member of the Pride and Property Committee and chairman of the Spring Dance Ticket Committee. She has participated in bowling, basketball, volleyball and swimming. Sue is now assistant editor of Roundup.

## SW students give to charity

SW students of many advisories are donating their time and money during the Christmas holidays to those less fortunate. Their projects follow the tradition that has existed at SW for years.

Student Council will donate \$100 to the Post-Dispatch fund for the St. Louis area's 100 Neediest Cases. This is a project which has not been previously done by the Council.

Advisories which are also giving to the 100 Neediest Cases are Mr. Merchant's, Miss Bersch's groups, and Miss Lewis' groups.

### Tree of Lights

The Salvation Army's Tree of Lights will glow brighter because of a donation from Miss Skinner's advisory. A \$10 gift has been sent to the American Red Cross to help our armed forces in Viet Nam celebrate the holiday.

Some groups will help certain other charities. Students of Miss Murray's group are collecting to send a gift to the Lott's Creek Community School which is located in Hazard, Kentucky. This

## SW choirs present annual Christmas and 1st period

SW music groups, under the direction of Miss Meyer, Mr. Monachesi, and Mr. Nordman, will present the annual Christmas program in duplicate and sessions during first period today.

This year the program will feature a mixture of the traditional and some new, added material. The traditional Christmas story will be read by Richard Battered; Jan Sheehan will narrate the overall program, as Linda Diesing and Charles Derus supply background music at the organ.

The Mixed Choruses, seated in the balcony, will sing *Silent Night* and *Angels We Have Heard on High*. Boys Glee will sing *Beautiful Savior* with Linda Snider as soloist and Girls Glee will contribute *Gesu Bambino* with soloist Joyce Fehr.

Combining with the traditional will be some new selections. A cutting from the opera, *Amahl and the Night Visitors* will be presented. The main characters will be Judy Meyers, mother; Ray Horn, Amahl; Bill Kerch, George Schroll, and Bill McDavid, kings. The Concert Choir and Mrs. Kinderfather's Modern Dance Club will also contribute

to this short presentation. The SW band, directed by Mr. Nordman, will play familiar carols.

Among soloists will be Mark Stahlhut, Jean and Joan Riemann singing *O Bambino*; Diane Peralia with *Carol of Drums*; and an ensemble of Sharon Hollacher, Linda Snider, Doris Purcelli, John Montgomery, Dennis Sherik and Richard Rossi singing *Sing Noel*. Other soloists include Steve Morris, Martha Patterson, and John Montgomery. Miss Guenther and Miss Hachtman will supervise staging, as usual.

As a grand finale, the *Hallelujah Chorus* will be sung by the vocal groups with SW graduates joining them on the stage.

During seventh period, the senior members of Concert Choir will carol in the halls.

## Students travel during holidays

The majority of SWerners will remain at home to celebrate the Yule season, but many students will travel quite a distance.

Bill Williamson will travel to Miami to see the Orange Bowl game while Christy Brandt will soak up the St. Petersburg sun. Martin Fischer will take part in the Temple Youth Group-Winter Conclave in Omaha, Nebraska. Pat Gorsuch will be in Chicago for the holidays.

Charlie Heineman will head south of the border to Mexico, while New Orleans will be the destination of Bill Biggars. Ann and Pat Winfrey will go to Kansas City, and Linda Karpinski will sing carols in Gama-lia, Arkansas. Melinda and Susie Soroka will go back home to Memphis for Christmas, and Mike Anstedt and Tom Jarvis will camp out at Paradise Lake in southern Missouri.

Nickie Willcox and Linda Weyand will travel to New York with their Girl Scout troop, and Pam Grebe will visit relatives in the East. Ron Draper will be in Paris during his vacation—Paris, Illinois that is. Jim Cook will tour the Air Force Academy in Colorado, and Cathy Voss will be in Washington, D.C.

## In the wind

### Yuletide holidays

Dec. 24-Jan. 2 . . . Christmas vacation

Jan. 3 . . . Classes resume

Jan. 6 . . . SC elections 2nd period

7:30 p.m. WIL basketball game

Jan. 10-14 . . . Finals for eights

Jan. 15 . . . Sr. Prom

Jan. 17-20 . . . Finals for semesters one-seven



## Mailmen hustle

The annual Senior Post Office began on Dec. 20 and continued service until yesterday. Postal rates were two cents for each card or item that was delivered. Operating from backstage, the office was open for an hour each morning between 7:30 and 8:30.

The eights' committee members were assisted by Student Council members from each advisory.

## A season for growth

As we approach this holiday season, two celebrations: Christmas and Hanukah—in two major religions are in progress.

It is interesting to note that the man whose birth and life is commemorated at Christmas never became a Methodist, Baptist, Catholic, or for that matter, a Christian. He never was a Jew or celebrated Hanukah as they do now. It was said that he grew in wisdom, in stature, and in favor with God and Man. As he grew, he simply became a MAN.

Therefore, during this season, whatever our creed, we hope that all of us might seek to strengthen it, and all grow toward the highest goals.

Then someday, with the sincere effort of all, the old Christmas verse might become a reality:

"Peace on earth and goodwill toward MEN."



## Letters to the editors

Dear Editor,

The Viet Nameese war is one of politics. It will not be settled in the near future. Many important issues are being fought over, but the main issue is the conflict between the free world and the world of Communism.

Communism, like cancer, spreads until it smothers the life out of its victim once it gets a foothold. Like cancer, it must be destroyed before it destroys.

The person who opposes the war is not necessarily a Communist, but he should realize that giving up and going home now would be another feather in the cap of the Communist world.

J.C.

## Lucy, Charlie look to future

Lucy: Hi, Charlie, I was just thinking about how beautiful our prom will be—"Camelot" in the Old English setting of Cheshire Inn.

C.B.: Yeah . . . I guess our Class Day luncheon at Trader Vic's is the stuff that dreams are made of, too.

L.: Oh, Charlie. All that will be the beginning of the end for us here at SW.

C.B.: I know, but there's a lot ahead for us, too. Don't forget that class motto.

L.: That's the one Laura Robinson submitted—"We have the key, the world is our door."

C.B.: Right. Besides, if you get all choked up you won't be able to do justice to the class song that Doug Nuelle and Cathy Voss wrote.

L.: All right, C.B. I'll try to think about the happy side of graduation. Take our class finances, for instance. Thanks to the turnout at our dances and at the Shinananny, there's no chance for us to go in the red.

C.B.: Speaking of red, Rudolf loved the *Reindeer Komp*.

L.: And, speaking of Christmas dances, have a wonderful holiday, Charlie.

C.B. and L.: Merry Christmas, everybody!

Dear Editors,

When we disapprove of the actions of the "Viet-Nics," we should not throw the baby out with the bath water. Let us never forget that war is an evil. War is not an end to war and we should use all possible means and efforts to promote peace. While there are no easy answers, in a democratic society people have the right and duty to dissent when their conscience so dictates. *Pioneer* has taken a very melodramatic approach to this issue.

John Montgomery

## It's a real dog's life for freshman's St. Bernard



BARON BARTHOLOMEW

He sets his dish on the coffee table when he's hungry. When the Glanzs have guests, Baron greets them at the door escorts them to their seats and then sits on the couch, front feet on the floor, waiting for the conversation to start. If Baron gets thirsty, he simply jumps in the bathtub, turns on he faucet with his nose and drinks!

There have been times when Baron's antics have proved embarrassing. Once the Glanzs were entertaining guests one of whom had worn a new \$150 cashmere coat. When it was time for the guests to leave, Mrs. Glanz went to get the coats and was astonished to find only the collar and sleeves of the coat. Baron had eaten the rest.

## St. Louis celebrates holiday season

The holiday season is here at last. In Stix's window is a "frozen" pond with little characters skating to the music of Santa and his band of reindeer playing our favorite Christmas carols.

Various sizes and shapes of gaily-wrapped gift boxes form the buildings of a mountain village which overlooks a toy train scooting along the foot of the town in Famous' window.

On the overpass above Olive Street is Santa's sleigh with his reindeer 'flying' across the city to spread cheer to all on Christmas morning.

# Stained glass is old art

by Judy Dunajick

The unusual craft of Emil Frei, Inc. of South St. Louis is the ancient art of making stained glass.

For the last 60 or 65 years, three generations of Freis have supervised the making of stained glass windows. Before World War II, business was done in Munich, Germany, also. Now,

windows are created in a large, converted house. Since the tedious work must be done by hand, Mr. Frei employs only 16 or 18 people. An apprenticeship of several years is required for some of the workers.

Designer Mr. Francis Deck, who studied stained glass at

Washington University, explained some of the company's business. The handblown glass used is already stained, and comes mostly from West Germany. Orders for windows come from all over the United States as well as St. Louis. The most popular style is American contemporary. It can be pictured in leaded stained glass or faceted glass. Some stenciling is done on silk screens.

The process of creating a leaded window was explained by Mr. Deck and other employees. From a sketch of the design or cartoon, a full-scale drawing is made. An exact pattern is used by the cutter in shaping the individual pieces. From more detailed sketches, the designer then paints the sections of glass, which are fired in kilns. The glazier solders and waterproofs the window together with narrow lead strips and cement.

Stained glass window making is a beautiful craft which should be given the respect and attention of the other arts.

## It's no gridiron, folks

"If they can't push you aside or knock you down, they'll climb right over you," stated an irate SW teacher. She was not referring to a professional football fullback plunging through the line for a first down. Her reference was to a few students at SW, some of whom seem to think of the corridors as no more than a narrow gridiron.

It might be well to note that "Pro" football players are paid well for taking their opponents out of play and, when off the field, they don't make a habit of throwing a cross body block into anyone who gets in their way.

You might also consider that the normal SW student, walking from class to class, is not equipped with a helmet and shoulder pads to ward off flying knees and forearms, though if things get worse, such gear might not be a bad investment. The football field and SW halls can be compared from one standpoint, however. Both have their own rules. Referees are hired to enforce the rules of the game of football. SW has left it up to the students to enforce the rules of common courtesy. Think twice before you try to make that first down on the way to history. You might be penalized half the distance to your next class



Question: IF IT WERE POSSIBLE, WHAT WOULD YOU GIVE SANTA CLAUS AND WHY?

**Don Schoenbeck, Roger Davis:** "Our French tests, they'd fit in well with the 'sub-zero' weather!"

**Gilny Jung, Donna Newell, Lucy Dunajick, Nancy Harman:** "A hot pink Santa suit, we're tired of red."

**Judie Greenway, Dottie Ruckman, Winifred Wagner, Kathy Ousley, Linda Pillard:** "A poison pen letter because he missed our houses last year."

**Rieh Rossi, Virginia Vago, Nancy Santhuff, Bill Brine, Kandy Kane:** "Nickels for parking meters."

**Debbie Doetzel, Linda Graul, Lucy Meiners, Bev Nance:** "Batteries for Rudolph's nose and a fire extinguisher in case he short-circuits."

**Barbara Kerr:** "A can of weed killer so he won't have to 'hoe, hoe, hoe.'"

**Alan Purvis, Marcia Rutledge, Sue Hurley, Jim White, Bridget Dower:** "A year's supply of Segó for over-abundant reasons."

**Advisory Room 24:** "A shoe horn for the chimneys, they're getting smaller this year."

## This 'n' That

### Tobey wins honor in Home Living

by Jane Prass

Sue Tobey, semester seven of Mrs. Hunt's advisory, was chosen to represent SW in the St. Louis district of the Youth Recognition Program, which annually honors an outstanding senior girl who plans to study home economics in college. Three other outstanding girls who entered the contest were Janet Gielow, Linda Karpinski and Melanie Welsh. Because of the stiffness of the competition, there is often very little difference between the actual winners and the other entrants selected by the school. Therefore, all of the girls deserve congratulations.

'n'

Craig Marks, having won first place in the Press Club II essay contest, was awarded an opportunity to meet Secretary of State, Dean Rusk. However, Craig was unable to keep his appointment with Mr. Rusk because of a certain fellow named Billy Bigelow.

'n'

Apologies go to Pat Winfrey, semester three of Mrs. Davies' advisory, whose 4.2 average was omitted from the honor roll.

'n'

Dick Shimamoto, January '59 graduate, was married in October to Vicki Hart.

'n'

Mr. Murdock was recently awarded a Soldier's Medal for saving another man's life in 1963 in Fort Knox, Kentucky. Mr. Murdock had disposed of a live grenade from a concrete emplacement.

### Voss's Verses

Whether you spend Christmas  
At home or far away,  
We hope that it will be  
One terrific holiday!

## Famous-Barr solves holiday problem

The Christmas season is always the time of year when the problem of what to give a favorite friend becomes the "question of the year." Nan Pandjiris, fashion co-ordinator at Famous Barr, has made these very helpful suggestions.

For the man in your life, she suggests several gifts: among them, a subscription to *Sports Illustrated* magazine, a season ticket to some sports event, a small gym bag, a pen and pencil set, a tie tac, a transistor radio, golf balls, crazy hats, jazz record albums, books on cars or guns, a sweater, or a ticket to the auto show. To be avoided are cologne and aftershave lotions, wallets, cuff links, car accessories (boys seem to think girls know nothing about cars), al-

most any kind of jewelry, and crazy sweatshirts.

It is considerably easier to buy for girls. Almost any kind of jewelry, perfume or accessory will do. The new hair decorations, such as pigtailed braided with ribbon and decorated barrettes, along with small evening handbags that glitter and sparkle with silver or gold, evening slippers, and lacy scarves have become very popular with the

female set. A girl will appreciate any accessory to compliment her holiday costume.

What will her holiday wardrobe look like? Delicate laces and pastel colors dominate the holiday fashions. Dresses which are slightly fitted, "granny" prints, and prints with little flowers, called the *mille fleur* or small flower print, and evening suits will make this year's holiday season one of the most feminine ever.



WEARING SOME OF THIS YEAR'S HOLIDAY FASHIONS are (from left): Ginny Jung, Jane Belford, Carolyn Phillips, Toni Messina, Linda Laidlaw and Trish Harris.

## Pioneer highlights college campuses

As SW grads return from college for the annual Christmas aud, our thoughts turn once again to that important question, "Where should I go to college?"

In a series of articles, *Pioneer* will highlight various campuses which SWerners have visited through summer workshop or College Days.

If a student wants to attend a large university, one of the Big Ten schools might be recommended. Such a school is Northwestern University.

### Near Lake Michigan

Located along the shore of Lake Michigan in Evanston, Illinois, fifteen minutes from downtown Chicago, NU offers an ideal setting to approximately 6200 undergraduates.

On the original campus in Evanston are the Colleges of Arts and Sciences; the Schools of Business, Education, Journalism, Music, and speech; and the Technological Institute. On the Chicago campus are the professional Schools of Medicine, Law and Dentistry.

### Small town seclusion

The Evanston campus offers the seclusion of a small college town along with the convenience of a large metropolis and its many cultural advantages.

For further information on the Northwestern and other colleges visit your Guidance Office soon. NEXT — SIU.



## SW super salesmen

One of the new classes offered this term at SW is Retail Merchandising class. On Dec. 3, the class, led by Mr. Huguely, gave demonstrations of how to sell certain items. The *Pioneer* super-salesman awards go to Mike Cracchiolo, for selling a skateboard with racing slicks, Gary Brown, for selling a McCluer senior ring to a SW student and to Dwight Cole, and Dennis Klemp for selling a course in body building to Mr. Huguely.

## Records, travel, clothes make pop blues singer

Who sings, dances composes songs, has his own 18 piece orchestra, sells millions of records, travels over one hundred thousand miles a year, performs over 4800 minutes on stage, gives away 5000 autographed pictures and 1000 pairs of cuff links each month and plays drums, organ and guitar?

I had often heard that James Brown lost up to seven pounds a performance and, after seeing him hold a packed house at Kiel Auditorium on the edges of their seats for five hours, I could well believe it.

If James seems to have the stamina of a professional athlete, perhaps it is because he

spent five years in the boxing ring and pitched for a professional baseball team before becoming a singer.

When asked about his vigor and enthusiasm on stage he commented with a grin, "I believe in giving people their money's worth."

## Christmas 1965

Christmas carols sung out of tune, Snow turned silver by the light of the moon, Children's faces alight with glee, Presents 'neath the Christmas tree, Hearts at peace with Man and God,

So much joy we think it odd That across the sea there is a place

Where fear is read on every face,

Where loneliness rules and hatred breeds, And suspicion sprigs from petty greeds.

Where Christmas is lonely, cold, and still, With never a thought of peace or good will.

Two worlds on this earth of ours . . .

Each one ruled by determined powers.

## Freshmen hear musical performances

by Ann Winfrey

### SWerners display talents

Several budding SW musicians, members of Concert Choir, have displayed their talents before the members of the Understanding Music classes. The Barbershoppers have also performed. This week the freshmen will view an original Christmas play,

written by Danette Key, a semester seven.

### Past performances

In the past, students have had the privilege of hearing Marty Bronson and Lisa Drake, Edwin MacArthur and a group of Mundy Opera stars, and Vince Pavia, former SW student, and his band.

## Seniordance held in gym

The "Reindeer Romp", this fall's senior dance was held December 15 in the old gym from 3:30 to 4:30.

Tickets, supplied by the committee headed by Donna Hampton and Lynda Lawrence, cost twenty-five cents. Members of their committee were Linda Bippen, Iva Zeiser, Patti West and Nick Dubis.

Publicity was provided by Gary Clifton, Laura Robinson, Roger Sutterfield, Dave Dembeck and Brenda Dunlap, under the direction of Dave McConnell and Paul Hetherington.

While consuming refreshments brought by Gary Arnold, Carolyn Milcic, Carla Tanner, Karen Luchan, Elaine Reimler, Dennis Green, Mark Stahlhut and Gerry Diefenbach, students who attended the dance admired the gym, which was decorated by Morgan and Knichel's committee. Committee members were Sue Lynch, Diane Winterer, Bonnie Black, Bobbie Nichols, Mike Wills, Dan Parker, Barb Smith, Dave Fannon, Judy Meyers, Pat Berry and Rick Read.

Santa Claus was there, handing out candy canes to all who were lucky enough to go, and watching to see that everyone who got a candy cane deserved it.

# Where to go on dates is now as easy as ABC

Looking for a fun date even though your wallet is flat from Christmas shopping? Thanks to Miss Roduit's Home Living 1-6 Class, here are the ABC's of inexpensive dates for the year round:

Art Museum, Interpreting abstracts can teach you a lot about your date.

Bowling, bike riding or — bird watching?

Climatron. Who needs Hawaii?

Downtown. "The lights are much brighter there," etc., etc.

Eugene Field House.

Fishing or fashion shows.

Grant's Farm.

House hunting. Display houses are fascinating.

Ice skating.

Jefferson Memorial. The gift shop has HUGE lollipops.

Kiel Auditorium.

Library. The downtown branch has no end of browsing matter.

Museum of Science and Natural History, Oak Knoll Park.

Old Courthouse.

Picnics.

Quench that unbearable thirst at SW Steak.

Restaurant. Found a place that's really you?

Sleigh riding or swimming. (Preferably not on the same date.)

Teen town.

Unearth the ancient family pictures.

Visit friends.

Watch TV.

EXplore a cave. (shudder)

Yearbooks. (did I really look like that last year?)

Zoo. Inevitable, wasn't it.

This is a terrific time to be growing up with the city, so get out and enjoy it!

## Hanukah coming

The Jewish feast of Hannukah begins on the 19th of Kislev (December) and continues for 8 days. This ancient rite of the Macabees commemorates the victorious battle, the miracle of the burning oil, and the Temple dedication.

Hannukah takes another name from the traditional Menorah and torches, Feast of Lights. Candlelight processions with the Torah, Temple ceremonies and family activities set the holiday spirit of Hannukah.

This feast of "Right over Might" is one of the longest Jewish holidays.

# SW Cagers oppose Dutchmen on Jan. 8 in 4th PHL game

SW varsity cagers will meet the Cleveland Dutchmen at 3 p.m. on Saturday, Jan. 8, in the fourth league game for both teams.

In the season opener, the Steers defeated the Cavaliers 56-49 on the DuBourg home court. SW handled the DuBourg press very well by breaking it in both halves. The close fought contest is evidenced by the half-

time score of 26-25 in favor of DuBourg. Led by McCrary, West and Gresnick, who scored 14, 12, and 10 points respectively, SW roared back to a 56-49 victory in the second half.

### Slow start in league

Unfortunately, the cagers met two of the toughest teams in the PHL in their first two league games. Sumner defeated the Longhorns 67-52 in the first league game. Gresnick scored 17 points to lead the team, but the Steers couldn't contend with the Bulldogs who shot phenomenally and used their speed for a fast break advantage.

Beaumont exploded late in the second quarter to lead SW 39-24 at the half. The cagers staged a comeback in the second half, but couldn't overcome the deficit and the buzzer sounded ending the game 61-56. Gresnick, Bishop and Caldwell paced the team with 15, 12 and 10 points.

### Hard fought heartbreaker

Maplewood squeaked past SW in a thrilling contest that ended after three overtimes. At the end of regulation time, the score stood tied at 50-50, but the team was weakened by the loss of Gresnick and McCrary due to fouls. The game ended 67-66.

# Girls' basketball defeats McKinley

The first squad of the girls' basketball team scored a 20-15 victory in their opening game against McKinley on Dec. 8.

In their second game Dec. 15, the girls were again victorious, defeating O'Fallon 16-10.

The team has two divisions this year, a junior-senior squad and a freshmen-sophomore squad. The second team played McKinley on Monday, while the first team played Soldan yesterday.

The girls returning from last year's team are M. Acree, P. Chipps, G. Chouquette, B. Gilcrease, B. Kerr, S. Latimer, K. LaGree, T. Nischwitz, C. Shantz, C. Zotos, and S. Sprung.

# SW grid injuries minor

"Although we were plagued with numerous small injuries, no one was seriously hurt this year," commented Coach Gladstone, on the SW grid season. "Every boy hurt during a game walked off under his own power, and most of them were playing again by the next Saturday."

According to Mr. Gladstone, the three most common injuries in high school football come to the "ankles, knees and shoulders in that order." Steers Oehler, Hayashi, Villani and Gresnick suffered from sprained ankles, while twisted knees plagued Richardson, Bentzinger, Kupferer and Williams. SW shoulders were our most vulnerable point this year as Richardson, Beisher, Parker, Shaw, McLellan and Gresnick were injured. Pucci and Novak suffered broken hands, while Nichols and Karl

received broken noses, both in practice.

No teeth were lost, and Copeland was the only one to receive stitches for an injury: a laceration of the forehead. Miscellaneous aches and pains include McLellan's sprained toe, Zilm's bruised clavicle, Frank's pulled thigh, Parker's hamstring, Hayashi's bruised hip and Geiger's leg injury.

In the words of Mr. Gladstone, "Injuries are a part of football; you've got to be prepared for them."

## Ron and Dennis

# Able boys lead teams

One of the newly elected co-captains of the matmen is Ron Ward, semester seven of Mr. Polster's advisory. Ron began wrestling three years ago when the team was formed and currently wrestles in the 145 pound division. His toughest opponent was a boy from Soldan who, fortunately, graduated. Ron adds, "I'm glad he's gone."

Although Ron has not received any individual honors for wrestling, he has been one of the better members of the team because of the great enthusiasm he shows at the meets. Ron was asked if anything unusual has ever happened to him at practice. He replied, "It would be unusual if something unusual didn't happen!"

When asked about this year's team, Ron said that it looks as if we have a good chance, but with all the new boys on the squad this year, there is still a lot of work to be done. He also predicted that instead of finishing third in league, the SW matmen would finish with either a first or second place to their credit.



TWO MATMEN battle in a practice match between SW and Vashon at SW on December 7.

# Matmen meet Mehlville

Freshmen matmen will meet Mehlville High school on Jan. 4. The wrestling team battled in the Mehlville Invitational Dec. 17-18, Maplewood Dec. 21 and Beaumont last night.

The SW wrestling team lost to Ladue on Dec. 11 by 14 points. Though the Junior Varsity downed Ladue 28 to 23, the Varsity fell by the score of 32 to 13. Some of the boys who pinned their opponents were Larry Karagiannis, Larry Buehler, Gary Walker, Terry Jost, and Robert Adelsberger.

The most thrilling part of the match came when the Junior Varsity's score was tied. Bill Biggar, in the heavyweight division, was then up against a boy weighing 40 pounds more than him. Still, Bill pinned the 220 pound boy and broke the tie.

After the match, Mr. Williams, assistant coach, said that he saw improvement in the boys. "They are beginning to use their heads instead of just their weight and strength."

Mr. Williams urges everyone to see the exciting wrestling

matches. At the Ladue match, Ladue's stands were filled with their rooters. SWerners should be able to show the same enthusiasm and support.

The matmen, led by the newly-elected co-captains Ed Atwood and Ron Ward, hope to finish the season high in the PHL. The

## 41 get awards at Awards Banquet

Forty-one football and cross-country athletes received monograms at the annual fall athletic award dinner Nov. 30 at Bevo Mill. Twenty-six boys received their first award at the banquet. Guest speaker for the gathering was Mr. Aldo Sebben, director of athletics and track coach at Southwest Missouri State in Springfield.

1965 football lettermen are: Ed Atwood, Bob Belshir, Fred Borchardt, Larry Buehler, Nick Dubis, Don Frank, Scott Geiger, Joe Gresnick, Dennis Hayashi, Dan Kelley, Tom Kupferer, Jeff McLellan, Ray Nappier, Bob Nichols, Craig Novak, Bill Oehler, Dan Parker, Tony Raia, Brian Richardson, Charles Scott, Dave Shaw, Rick Stevens, Gary Tash, Dave Villani, Gary Walker, Alan Williams, Frank Zilm, Sam Chandler and Andy Tash.

Lettermen from the state champion cross-country team are: Mike Cracchiolo, Ron Gotti, Charles Heineman, Dan Lawrence, Fred Martels, Dan Miller, Rich Schaefer, Fred Stephenson, Mike Tamme, Bob Weaver, Steve Wilson and Richard Batterberry.

match against Beaumont began the Longhorns march toward this goal.

At the first non-league match of the year on Dec. 3, SW was defeated by the strong team of St. Louis University High. The match started with a close score of SW 15 to SLUH 22, but the SW wrestling team slowed down and lost 83 to 28. While Ken Parisotto, a good varsity wrestler, was on the mat, he reinjured his dislocated shoulder. Ken will not see action again this year, but he has stayed on to assist the new wrestlers.

Ron Ward, co-captain of the team, believes that all the team needs is more experience in competition with other schools. The Longhorns did gain some valuable experience during two practice scrimmages with Vashon on Dec. 7 and Cleveland on Dec. 8. In both bouts SWerners won more matches than their opponents.

# WIL meets faculty Jan. 6

"Our team will be composed mostly of old-timers, but we will be more effective than ever," Mr. Berres optimistically explained to me concerning his views about the undefeated and scored upon faculty basketball team which will meet the WIL Goodguys on Jan. 6 of next year.

Referring to Mr. Gladstone, Mr. Murdock, Mr. Zuckerman, Mr. Williams, Mr. Ashley, Mr. Revelle, Mr. Gower and himself as the Old-timers, Mr. Berres claimed that the launching of the faculty's 1966 basketball season will be a success—even more so with the addition of Mr. Tucker.

Backing up these "men of men" with their spirit-producing cheers are the illustrious faculty cheerleaders. They are Miss S. Mueller, Miss Davies, Miss Lowery, Mrs. Loose, Mrs. Hunt, Miss Metz, Mrs. Siegel, Miss DeGrand and Mrs. Katsaras.

Of course, there is always another side and in this case it is from WIL Radio, in the words of Johnny B. Goode. "Our team, composed of Dick Clayton, Bob Osborn, Jim Brown, and some of the engineers, is really shaping up."



by Joan Riemann

In GAA basketball, team 8 (P. Chipps) and team 9 (S. Lynch) are battling for first place with only a few games to go. Teams 6, 10, and 11 are fighting for the "honor" of basement team.

In the Wednesday upstairs bowling league the Scatterpins (G. Kellar) have taken first place, while in the downstairs league the Five Jokers (B. Graebner) lead the other teams. In the Thursday upstairs league, the Bowling Devils (Sharon Sprung) and the Spinners (C. Henke) are tied for first place. Downstairs, the 007's (J. Eyerman) are in first place.

## Sport Schedule

Wrestling	
Jan. 7-8	O'Fallon Invitational
*Jan. 13	Cleveland
Jan. 18	Kirkwood
*Jan. 19	Vashon at SW
*Jan. 26	Soldan at SW
Basketball	
*Jan. 8	Cleveland at O'Fallon
Jan. 11	Homecoming Game, Afton at SW 8 p.m.
*Jan. 15	O'Fallon at Vashon
Jan. 18	Roosevelt at SW, 4 p.m.
*Jan. 22	Northwest at O'Fallon
*League contests	